

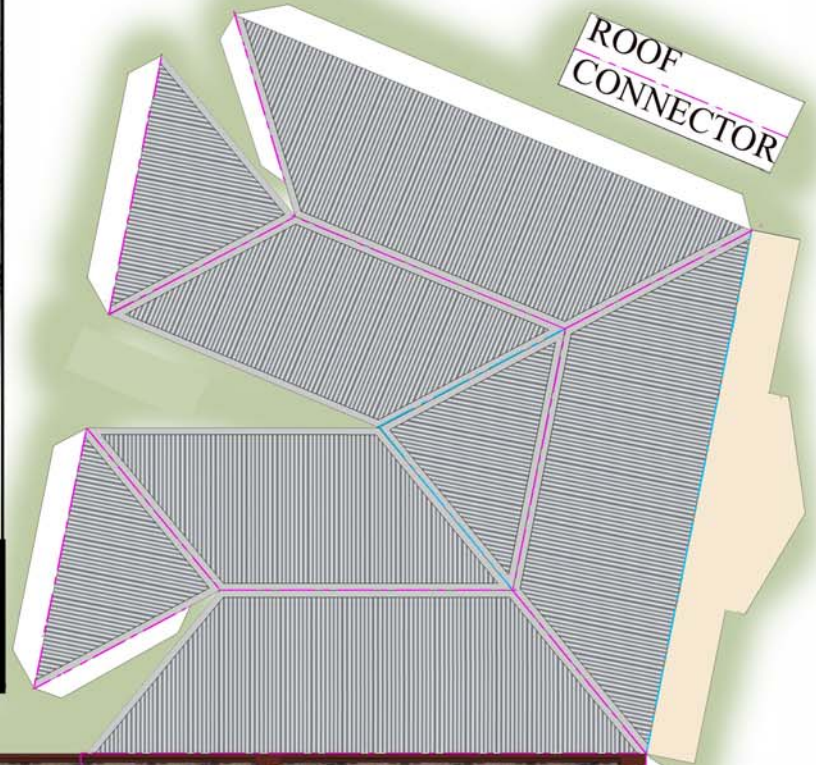
Last chance to see! Built 1892 - soon to be **demolished!**



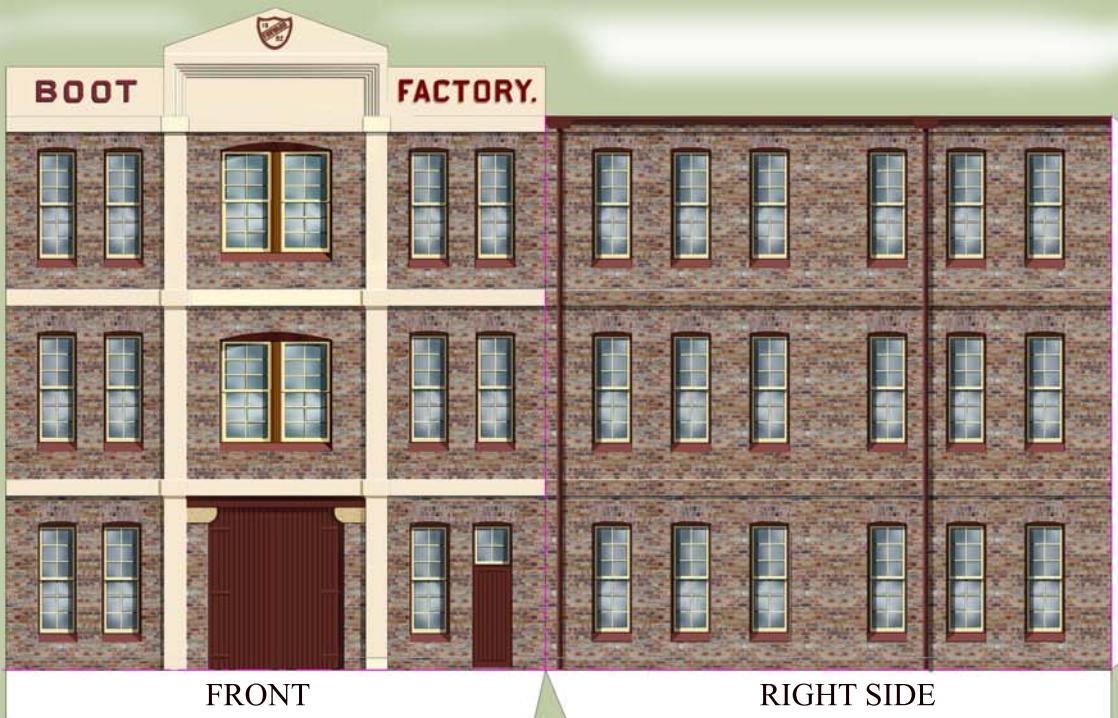
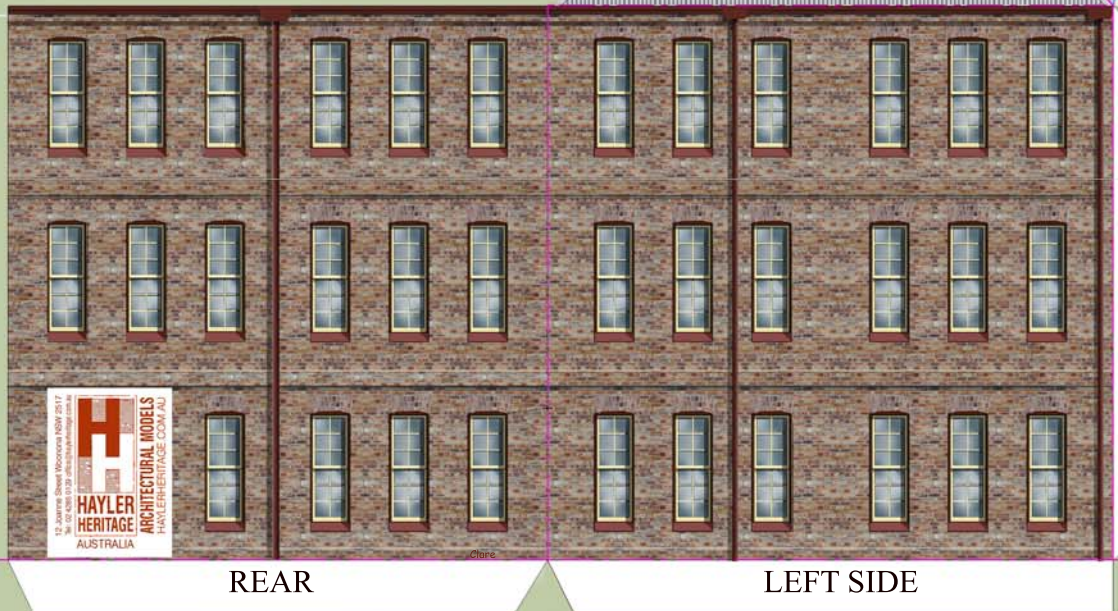
Boot Factory

27-29 Spring Street, Bondi Junction NSW

The Boot Factory was built in 1892 for William Sidaway and Sons. Production of footwear commenced soon after the factory was completed and continued until the factory closed in about 1969.



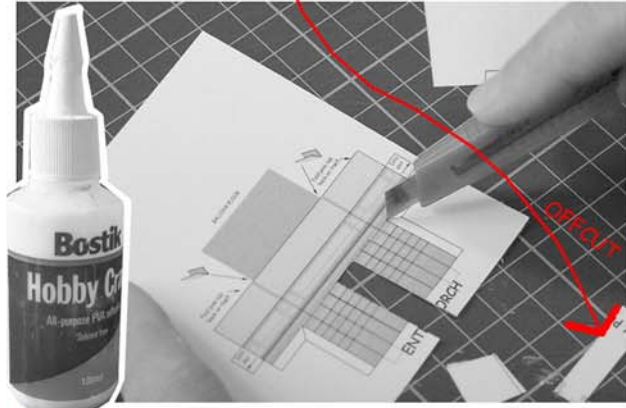
Card Model Kit



WHAT YOU WILL NEED



YOU WILL NEED A CARDBOARD CUTTER AND A STRAIGHT EDGE AS SHOWN ABOVE. (A SMALL POINTED PAIR OF SCISSORS ARE HANDY) YOU WILL ALSO NEED A CUTTING BOARD - E.G. A THICK SHEET OF CARDBOARD. PVA GLUE (AQUADERE or BOSTIK HOBBY CRAFT) IS THE BEST. USE AN OFFCUT PIECE OF CARD OR A MATCH TO APPLY THE GLUE.

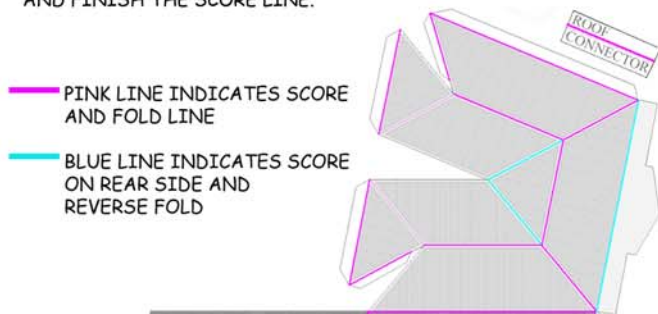


A. CONSTRUCTION SEQUENCE

CUT OUT ALL THE COMPONENTS FROM THE SHEET. THE GREEN BACKGROUND COLOUR HELPS SHOW YOU THE EDGES ALONG WHICH TO CUT. YOU WILL THEN NEED TO 'SCORE' ALONG FOLD EDGES WITH A BLADE. SCORING GIVES YOU A NEAT FOLDING EDGE AND IS DONE BY LIGHTLY DRAWING THE BLADE ALONG THE FOLD LINE (USE A STRAIGHT EDGE AS A GUIDE) BUT DO NOT APPLY TOO MUCH PRESSURE - TAKE CARE NOT TO CUT THROUGH THE CARD

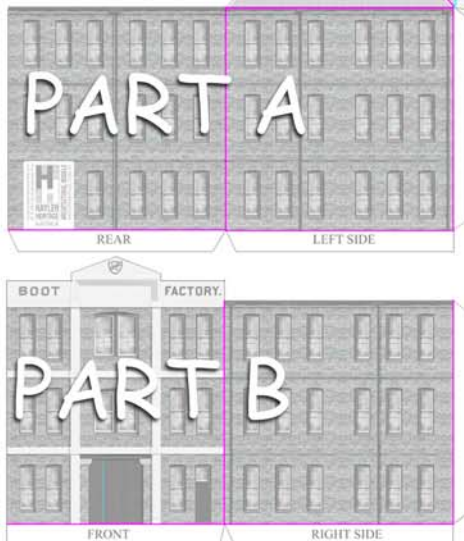
(YOU SHOULD FIRST PRACTICE THIS ON AN OFFCUT OF CARD)

MOST OF THE SCORING LINES (SEE DIAGRAM BELOW) SHOWN IN PINK ARE DONE ON THE PRINTED SIDE OF THE SHEET. HOWEVER, 3 REVERSE FOLD EDGES SHOWN BELOW IN BLUE ON THE ROOF NEED TO BE SCORED ON THE REAR SIDE OF THE CARD. USING THE POINT OF A CUTTING TOOL (OR A PIN) PUSH THE TIP THROUGH THE CARD TO MARK A BEGINNING AND END HOLE, SO WHEN YOU TURN THE SHEET OVER YOU CAN SEE WHERE TO START AND FINISH THE SCORE LINE.



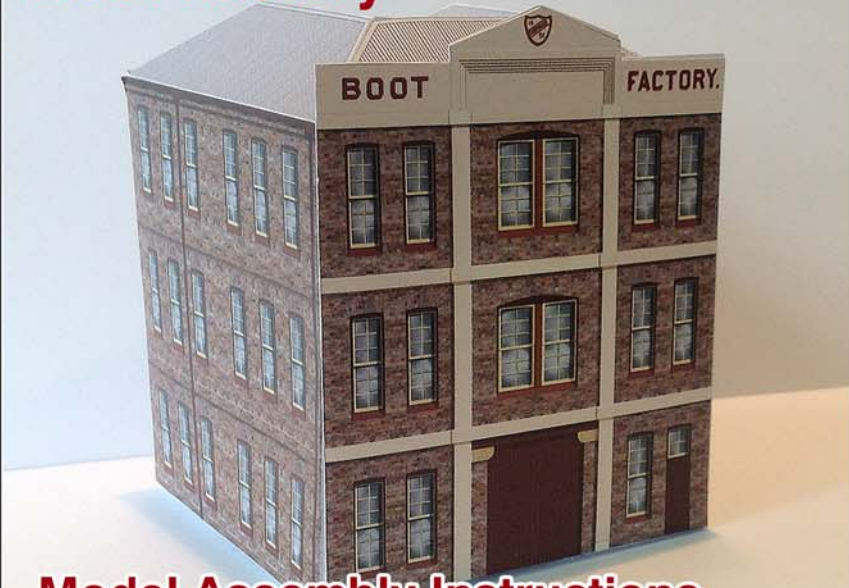
PINK LINE INDICATES SCORE AND FOLD LINE

BLUE LINE INDICATES SCORE ON REAR SIDE AND REVERSE FOLD



Fold edges - scoring diagram

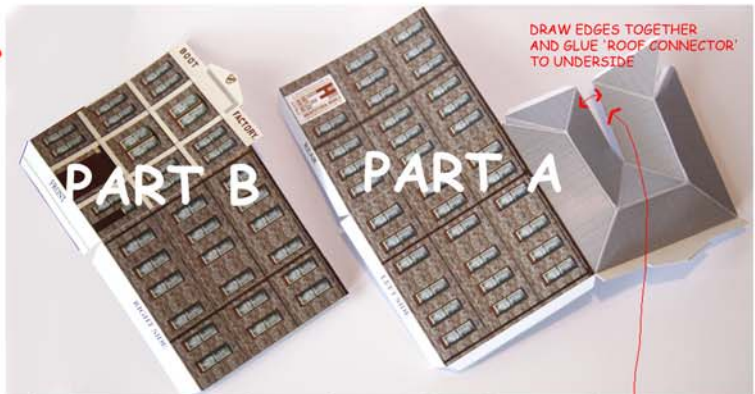
Boot Factory Bondi Junction NSW



Model Assembly Instructions

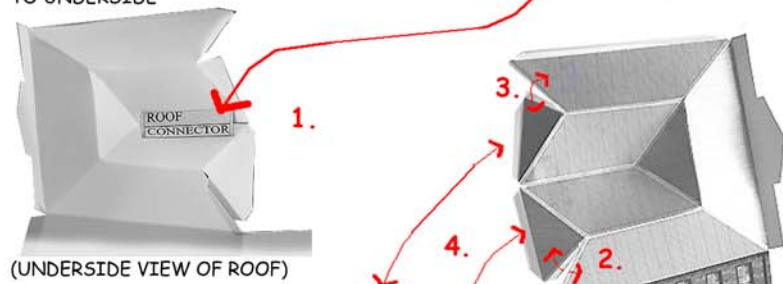
Photograph of Finished Model

B.



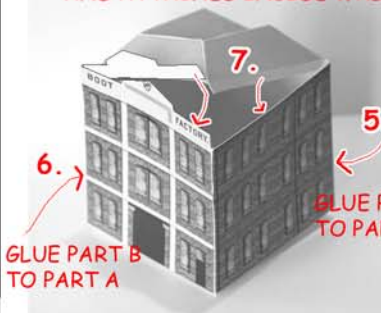
MODEL CUT OUT, FOLD LINES SCORED AND PREFOLDED - AND READY FOR GLUING.

FORM ROOF INTO SHAPE AS SEEN IN ABOVE PHOTO. THEN DRAW THESE TWO EDGES TOGETHER AND GLUE TOGETHER WITH FOLDED 'ROOF CONNECTOR' TO UNDERSIDE



(UNDERSIDE VIEW OF ROOF)

APPLY GLUE TO ROOF TABS AND ATTACHED INSIDE WALLS



GLUE PART B TO PART A

GLUE PART B TO PART A

DRAW THE TWO EDGES TOGETHER (2.) AND GLUE, SIMILARLY 3. SWING REAR WALL IN AND GLUE TO 2 ROOF TABS (4.)

ALIGN BOTTOM EDGES AND GLUE PART A TO PART B (5.) SIMILARLY (6.)

7. GLUE REMAINING 2 ROOF TABS AND ATTACH TO INSIDE WALLS OF BUILDING.

12 Joanne Street Woonona NSW 2517
Tel: 02 4955 0120 office@haylerheritage.com.au

HAYLER HERITAGE
AUSTRALIA

ARCHITECTURAL MODELS
HAYLERHERITAGE.COM.AU